

Energy Meters



7E.13.8.230.0000

1-phase kWh energy meter
nominal current 5(32)A
17,5mm wide
35mm rail mount
7-digit counter



7E.16.8.230.0000

1-phase kWh energy meter
nominal current 10(65)A
17,5mm wide
35mm rail mount
7-digit counter



Part No.	Ord. No.
○ 7E.13.8.230.0000	58105
○ 7E.16.8.230.0000	58111

7E.36.8.400.0000

3-phase kWh energy meter, 10(65)A, Single tariff, 70mm wide, 35mm rail mount, 7-digit counter

7E.36.8.400.0002

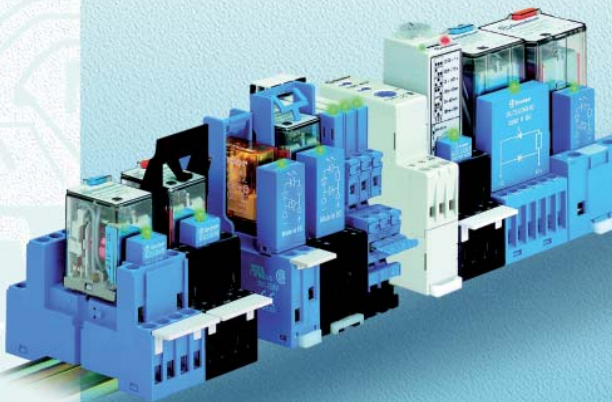
3-phase kWh energy meter, 10(65)A, Dual tariff (day and night), 70mm wide, 35mm rail mount, 2x7-digit counter

7E.36.8.400.0010

3-phase kWh energy meter for AC current max. 3x65A. MID compliant version



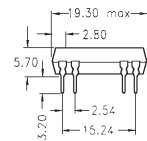
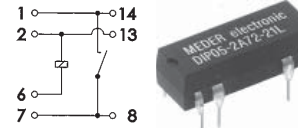
Part No.	Ord. No.
○ 7E.36.8.400.0000	58112
○ 7E.36.8.400.0002	58113
○ 7E.36.8.400.0010	62939



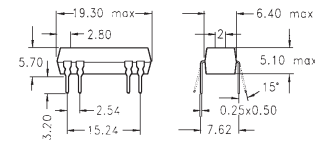
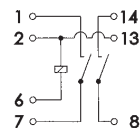
- signal, power relays
- bistable, timer relays
- relays for universal use
- modular interfaces
- relay sockets
- many other accessories

Reed Relays

DIP xx 12



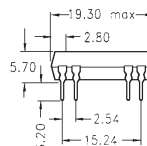
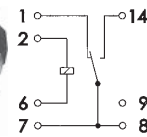
DIP xx 21



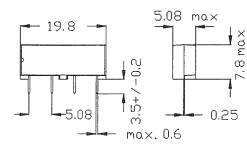
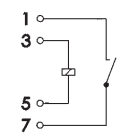
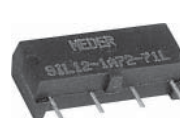
Technical Parameters	DIP xx 12	DIP xx 21
Contacts Type	SPST-NO	2 SPST-NO
Max. Switching Power	15 W	15 W
Max. Switching Current	1 A	1 A
Max. Switching Voltage	200 VDC	200 VDC
Operate/Release Time	0,5 ms / 0,1 ms	0,5 ms / 0,1 ms
Package	DIL	DIL

Part No.	Ord. No.	Description
S DIP 05-1A72-12L	854	5V 500R
S DIP 12-1A72-12L	3575	12V 1000R
S DIP 24-1A72-12L	855	24V 2150R
S DIP 05-2A72-21L	859	5V 140R
S DIP 12-2A72-21L	860	12V 500R
S DIP 24-2A72-21L	861	24V 2150R

DIP xx 51



SIL xx 71



Technical Parameters	DIP xx 51	SIL xx 71
Contacts Type	SPDT	SPST-NO
Max. Switching Power	3 W	15 W
Max. Switching Current	0,25 A	1 A
Max. Switching Voltage	175 VDC	200 VDC
Operate/Release Time	0,7 ms / 0,1 ms	0,5 ms / 0,1 ms
Package	DIL	SIL

Part No.	Ord. No.	Description
S DIP 05-1C90-51L	851	5V 500R
S DIP 12-1C90-51L	852	12V 1000R
S DIP 24-1C90-51L	853	24V 2150R
S SIL 05-1A7271D*	40512	5V 500R
S SIL 05-1A72-71L	856	5V 500R
S SIL 12-1A72-71L	857	12V 1000R
S SIL 24-1A72-71L	858	24V 2000R

* D - relay included protector diode. Cathode-pin 3, Anode-pin 5.