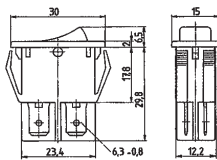


## 27x12mm Series

1555.310x



MARQUARDT



### Part No. Description

1555.3102 DPST, 16(4)A/250V, Faston 6,3mm, backlight, red, ON-OFF  
 1555.3108 DPST, 16(4)A/250V, Faston 6,3mm, backlight, green, ON-OFF

Part No.	Ord. No.	Colour
O 1555.3102	297	red
S 1555.3108	298	green

## 30x11 mm Series

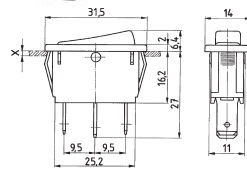
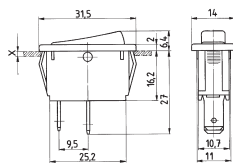
1831.3312



1830.311x



MARQUARDT



faston 6,3mm

### Part No. Description

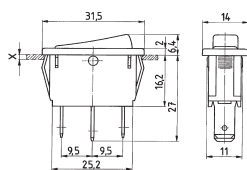
1831.3312 SPST, 20(4)A/250V, black, Faston 6,3mm, ON-OFF  
 1830.3112 SPST, glim-lamp, red, 20(4)A/250V, ON-OFF  
 1830.3118 SPST, glim-lamp, green, 20(4)A/250V, ON-OFF

Part No.	Ord. No.
S 1831.3312	473
S 1830.3112	468
S 1830.3118	469

1838.1509



MARQUARDT



### Part No. Description

1838.1509 SPDT-Center OFF, 6(4)A/250V, Faston 4,8mm, ON-OFF-ON

Part No.	Ord. No.
S 1838.1509	488

## 30x22mm Series

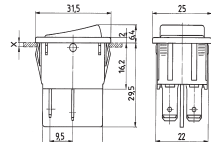
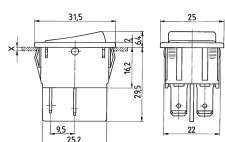
1832.3312



1835.310x



MARQUARDT



### Part No. Description

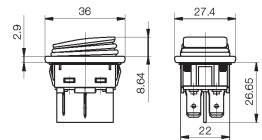
1832.3312 DPST, 16(4)A/250V, without backlight, Faston 6,3mm, ON-OFF  
 1835.310x DPST, 10(4)A/250V, glim-lamp backlight, Faston 6,3mm, ON-OFF

Part No.	Ord. No.	Colour
S 1832.3312	478	black
S 1835.3102	484	red
S 1835.3108	485	green

1935.311x



MARQUARDT



IP65

### Part No. Description

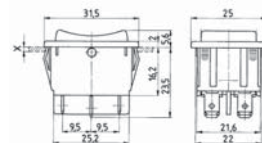
1935.311x DPST, 20(4)A/250V, illuminated, IP65, Faston 6,3mm, ON-OFF

Part No.	Ord. No.	Colour
O 1935.3112	547	red
O 1935.3114	549	orange
O 1935.3118	550	green

1839.1407



MARQUARDT



### Part No. Description

1839.1407 DPDT-CenterOFF, 6(4) A/250V, Faston 4,8mm, ON-OFF-ON

Part No.	Ord. No.
S 1839.1407	48785

203.201.011



MARQUARDT

Transparent PVC-protection cap for double-pole switches of size 30x22mm. Serves as dust and water protection of the actuation side.

Part No.	Ord. No.
S 203.201.011	575

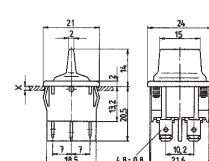
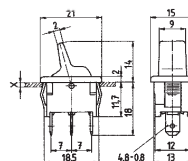
## Toggle Switches

MARQUARDT

1811.1102



1812.1102



### Part No. Description

1811.1102 SPDT, 10(4)A/250V, Faston 4,8mm, 19x13mm, ON-OFF  
 1812.1102 DPDT, 10(4)A/250V, Faston 4,8mm, 19x22mm, ON-OFF

Part No.	Ord. No.
S 1811.1102	450
S 1812.1102	451