

Capacitive Touch Sensors

MPR Series



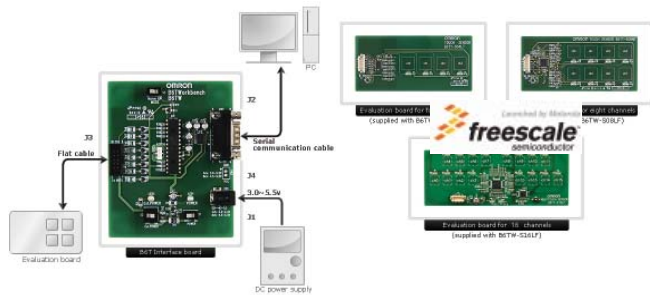
Capacitive Touch Sensor
Supply current: 4µA
Supply voltage min:1.8V - max.3.6V
Temperature range :-40 °C to +85 °C



Part No.	Description
MPR083EJ	Proximity Capacitive Touch Sensor Controller TSSOP16
MPR084EJ	Proximity Capacitive Touch Sensor Controller TSSOP16

Part No.	Ord. No.
S MPR083EJ	65545
S MPR084EJ	65546

B6TW Series



Our new touch sensor IC family, B6TS, is the key to designing flexible, responsive and reliable capacitive touch controls in the new generation of consumer brown and white goods and AV equipment as well as vending machines, lift controls and security access. The B6TS is a durable replacement to any Part No. of tactile switch.

Capacitive touch sensing is growing in popularity as an easy to implement, flexible and

reliable control interface for a wide range of applications. We are focused on increasing our research and development efforts in this market and will continue to expand our product range.

To minimise the cost of the finished system, cost-effective commercial single-sided PCB materials such as FR-2 or CEM-1 can be used. For non-flat user interfaces, FPCs (Flexible Printed Circuit) can be used to build unique design touch panel solutions. Touch keys can be produced using any non-conducting panel material including plastic, rubber, glass, marble and wood.

The Design Tool B6TWorkbench (B6TW) allows touch panel protoPart No. builds in hours rather than days and therefore speeds up time to market. The B6TW allows designers to experiment with user-definable settings to achieve desired sensing performance and accommodate anticipated environment changes in the custom specific touch panel (Man-Machine-Interface MMI)

Part No.	Ord. No.	Description
S B6TW-S04LT	68985	Development kit for Capacitive Touch Sensor 4-channels
S B6TW-S08LF	68986	Development kit for Capacitive Touch Sensor 8-channels
S B6TW-S16LF	68987	Development kit for Capacitive Touch Sensor 16-channels
O B6TS-04LT	63368	IC Capacitive Touch Sensor 4-channels SSOP 20
O B6TS-06LF	68983	IC Capacitive Touch Sensor 8-channels QFP 32
O B6TS-16LF	68984	IC Capacitive Touch Sensor 16-channels QFP 52

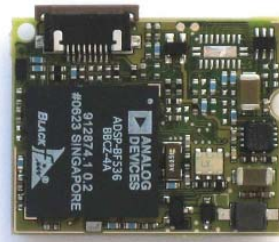
E 100 S



This kit is designed for the evaluation and development of applications using the QT100-ISG Integrated Circuit (IC).
Power supply: CR2032 Battery, 3V, 235mAh

Part No.	Ord. No.
O E 100 S	72290

TOPSEC Series - Biometric Sensors



Part No.	Ord. No.	Description
S TopSec ATMEL	68956	Development kit with biometric sensor ter.
S TopSec Testech	68955	Development kit with biometric sensor opt.
S TopSec UPEK TCS2	68953	Development kit with biometric sensor cap.

Pressure Sensors

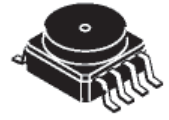
MPX Series



C344



C867



482 SMD

Part No.	Note	Range	Sensitivity	Linearity	Package
MPX 12 DP	Uncomp	0-10kPa/Bar	5,5mV/kPa	-0,5/+5%	C344C
MPX 2010 DP	Comp	0-10kPa/Bar	2,5mV/kPa	+/-1%	C344C
MPX 2010 GP	Comp	0-10kPa/Bar	2,5mV/kPa	+/-1%	C344B
MPX 2050 DP	Comp	0-50kPa/Bar	0,8mV/kPa	+/-0,25%	C344C
MPX 2100 AP	Comp	0-100kPa/Bar	0,4mV/kPa	+/-1%	C344B
MPX 2100 DP	Comp	0-100kPa/Bar	0,4mV/kPa	+/-0,25%	C344C
MPX 2202 AP	Comp	0-200kPa/Bar	0,2mV/kPa	+/-1%	C344C
MPX 4115 A	Int	15-115kPa/Bar	45,9mV/kPa	+/-1,5%	C867
MPX 4250 AP	Int	15-115kPa/Bar	45,9mV/kPa	+/-1,5%	SMD
MPX 4250 DP	Int	0-250kPa/Bar	18,8 mV/kPa	+/-1,4%	C867
MPX 5100 DP	Int	20-250kPa/Bar	20mV/kPa	+/-1,5%	C867
MPX 5500 DP	Int	0-100kPa/Bar	45mV/kPa	+/-2,5%	C867C
MPX 5999 D	Int	0-500kPa/Bar	9mV/kPa	+/-2,5%	C868C
MPXA 4115 AC6U	Int	0-1000kPa/Bar	4,5mV/kPa	+/-2,5%	C867C

*) Uncomp=non compensated, Comp=compensated, Int=integrated

Part No.	Ord. No.
O MPX 12 DP	8997
O MPX 2010 DP	5521
O MPX 2010 GP	8998
O MPX 2050 DP	9000
O MPX 2100 AP	9001
O MPX 2100 DP	9002
O MPX 2202 AP	48985
S MPX 4115 A	6547
O MPX 4250 AP	9008
O MPX 4250 DP	71722
O MPX 5100 DP	49816
O MPX 5500 DP	9006
O MPX 5999 D	9007
O MPXA 4115 AC6U	8615